

TECHNICAL DATA

POWER CONSUMPTION – Saves 50-70%.

EXPECTED LED LIFE – 100,000 hrs.

LED TECHNOLOGY – Latest technology on Hi-Flux LEDs, Minimal CRI of 70.

OPTICS – Special secondary optical lens design to maximize light output & uniformity. Each lens allows the fixture to generate different lighting patterns.

OPERATING TEMPERATURE – -40 C° ~ +70 C°.

HOUSING – Die cast aluminum housing with powder coat finish. Single, self-contained device, not requiring on-site assembly for installation, designed to prevent the buildup of water and accumulated debris. Tool-less entry housing. Watertight, IP-66.

THERMAL MANAGEMENT – Heat sink fins are incorporated into the external design to allow for dispensing heat.

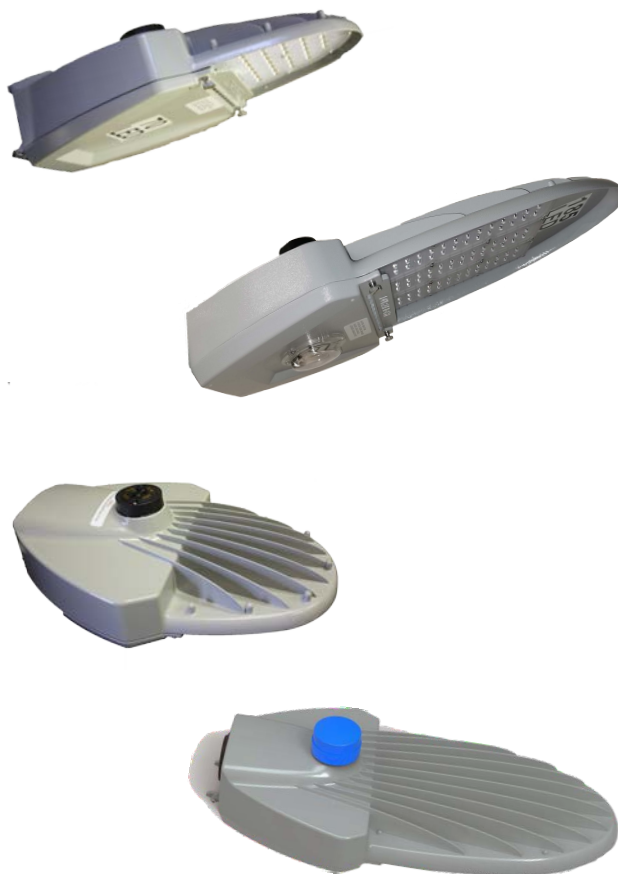
MOUNTING – ±5° mounting angle adjustability. Easy mounting hardware for mounting angles and different pole sizes.

ELECTRICAL FEATURES – Integral power surge protector tested in conformance to ANSI/IEEE C62.45 procedures. Comes with a variable voltage power supply either 120-277VAC or 249-528 VAC. Twist-lock shorting cap included (photocell option available). UL 1598, UL 8750, and CSA C22.2 certified. 7-Pin receptacle with dimmable power supply.

COLOR CORRELATED TEMPERATURE (CCT) – 4,000K

NEIGHBORHOOD FRIENDLY OPTION AVAILABLE

LUMINAIRE EFFICACY – ≥ 120 lm/w.

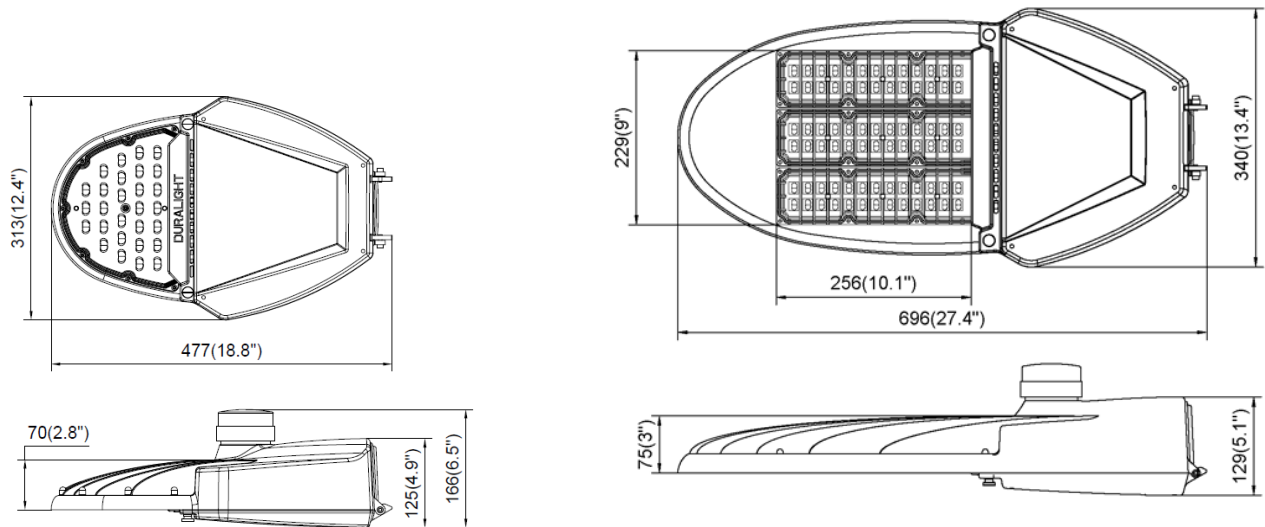


TRADITIONAL HPS REPLACEMENT	DURALIGHT MODEL
150W HPS	DURA-ST15
250W HPS	DURA-ST25
400W HPS	DURA-ST40

Model Number:	DURA-ST15	DURA-ST25	DURA-ST40
Wattage Level:	65W	120W	185W
Lumen Output*:	≈ 7150	≈ 15200	≈ 23100
CRI:	> 70	> 70	> 70
Power Factor:	0.98	0.99	0.99
Weight (lbs):	≤ 10	≤ 16	≤ 16
EPA (sqft):	0.46	0.45	0.45

Any additional technical information or sales support regarding these and other LED Products, please contact us:

HOUSING SIZES:



ORDERING/OPTIONS

Example: DURA-ST25-4K-120-2-GR-SCLB-G2

PREFIX		SERIES		WATTAGE LEVEL		CCT	
DURA	DURALIGHT	ST	Lighting	15	≈ 65W	4K	4000K (± 300)
	LED		Series	25	≈ 120W		(Standard CCT)
				40	≈ 185W		

VOLTAGE		DISTRIBUTION		FINISH		OPTIONS	
120	120V – 277V (Standard Driver)	2	Type II	GR	Gray Housing (Standard)	PC	Photocell ¹
480	480V			BK	Black ²	SC	Shorting Cap ¹
				BZ	Bronze ²	L	Utility Label
				DG	Dark Green ²	B	Bubble Level
				SP	Special Color ² (Provide Chip)		

Generation	
G2	Generation II 7-Pin Receptacle Dimmable Drivers Internal Bubble Level

TRASTAR, INC.

860 N. DOROTHY DRIVE, SUITE 600, RICHARDSON, TX 75081

PH: (972) 480-0888 | FX: (972) 480-8884

www.trastarusa.com